

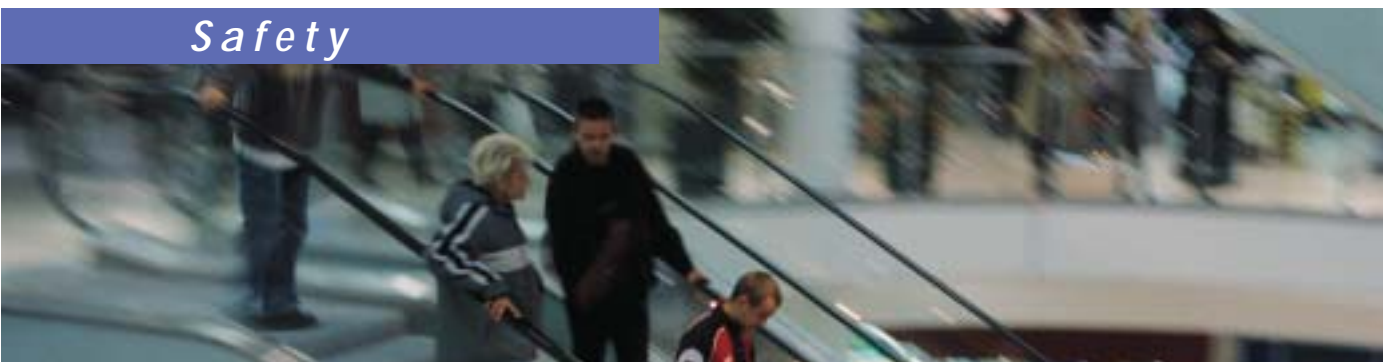
The heart of your building™



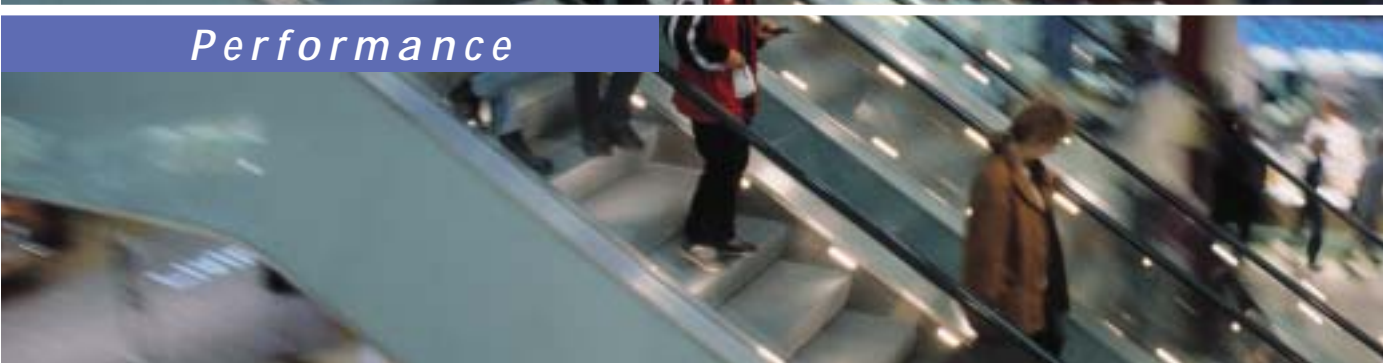
Retail and Public Centers

KONE ECO3000 Innovative Solutions for Escalators and Autowalks

Safety



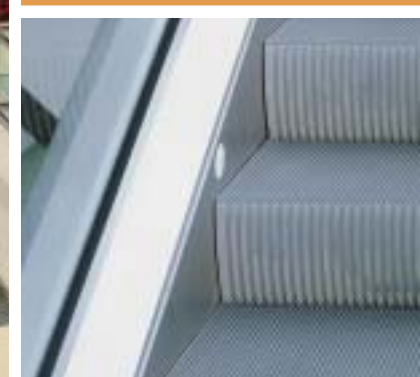
Performance



Reliability



Upgrade the safety, performance and reliability of your escalator or autowalk with KONE ECO3000 technology



Upgrade your escalator, and improve its safety, performance and reliability

When was your escalator installed? Thirty years ago? Twenty? Fifteen? Even in the last ten years, escalator technology has advanced significantly, making new features available that were not thought possible until recently.*

Keep the truss...

Your escalator truss is like an “envelope” that contains all the moving parts – and can last for the life of a building. KONE enables you to keep your existing truss yet upgrade the surrounding components. Preservation of the existing truss delivers:

- A new escalator at a lower total project cost than options involving expensive truss removal
- Faster, cleaner and less disruptive installation that doesn't require special crane hoisting or building façade and roof removal
- Elimination of costly structural modifications
- Preservation of existing building décor (floors, walls, ceilings etc.)
- The ability to preserve existing escalator cladding and decking.

...upgrade everything else

While a truss might last for the life of a building, the technology housed within it becomes outdated and moving parts wear out. Of course, upgrading just for the sake of incorporating the latest technology doesn't make sense. But new KONE escalator technology brings with it a range of interesting benefits:

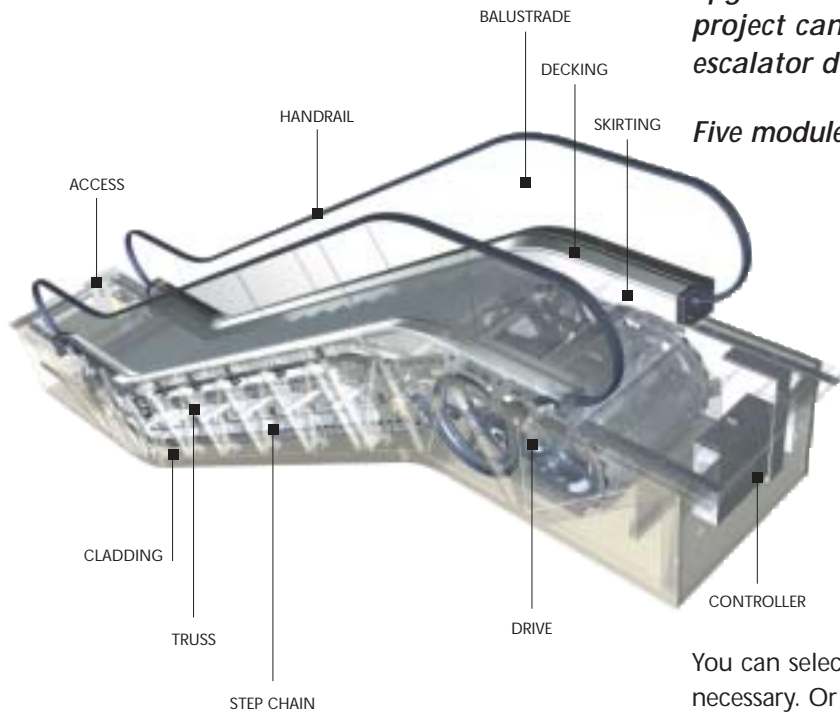
- Reliability and performance improvements
- Enhanced safety that meets or exceeds code requirements and may reduce liability
- Lower life cycle costs
- Quiet operation, a smooth ride and improved appearance to increase the perceived value of the building
- Lower energy consumption
- Reduced risk of environmental contamination.

*Throughout this brochure, “escalator” also refers to “autowalk”

KONE's innovative modular approach for escalators and autowalks

The patented approach of KONE ECO3000 Innovative Solutions is based on modules that allow upgrades to be made quickly with minimal impact on the building*. This ensures that your upgrade project can be implemented in a way that will both meet your financial constraints and reduce escalator downtime.

Five modules are available, details of which are provided in the enclosed inserts:



- Mechanical**
- Electrical**
- Step chain**
- Aesthetics**
- Safety solutions**

You can select the module that requires the most urgent attention and then upgrade the other modules later when necessary. Or you can commit to upgrade all five modules over 2 to 4 years to spread the cost. Or you can immediately upgrade all modules to obtain a new escalator in the shortest possible timeframe. Whatever you choose, KONE ECO3000 Innovative Solutions can be adapted to suit you and your specific requirements perfectly.



	<i>KONE ECO3000 Innovative Solutions</i>	<i>Traditional approach</i>
<i>Roof or entrance needs to be opened up</i>	No	Yes
<i>Architect's fees</i>	No	Yes
<i>Disruption to normal operation of building</i>	Minimal	Significant
<i>New technology for components</i>	Yes	Yes
<i>New aesthetics</i>	Yes	Yes
<i>Guarantee</i>	Yes	Yes
<i>Investment spread over number of years</i>	Yes	No

*All upgrades depend on the existing configuration of your escalator.

Why choose KONE ECO3000 Innovative Solutions?



A dedicated partner

Behind KONE ECO3000 Innovative Solutions is a global team dedicated to create value through the combination of innovative technology and excellent services.

Worldwide experience and expertise

Every year KONE supplies more than 2,000 new escalators and autowalks, and services over 35,000 escalators and autowalks - in every corner of the world.

A customer focus

KONE is committed to listen to customers, understand their specific requirements, and provide superior solutions that enhance the value of their investments.

Unique approach

KONE is the only company to offer a modular approach for an escalator full upgrade – an approach that covers not only KONE escalators, but other manufacturers' equipment too!

Leading-edge technologies

KONE is a pioneer in escalator technology. Recent breakthroughs include the KONE ECO3000 Chain and KONE ECO3000 Drive.

Professional project management

Every upgrade project is coordinated from start to finish by a local, professional project manager.

Safe and efficient installation

Escalator upgrades are performed in the most time- and cost-effective way by specialist teams applying KONE installation procedures and tools.

Consistent, high quality

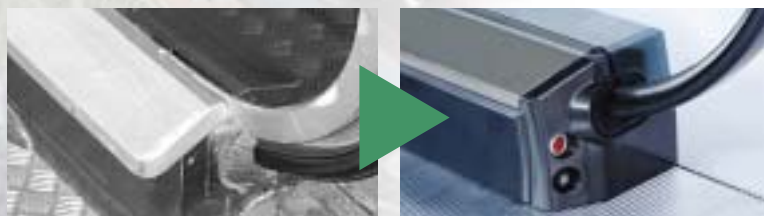
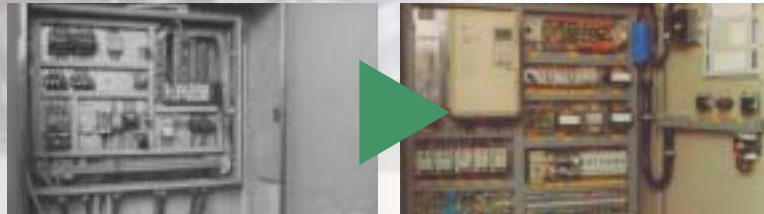
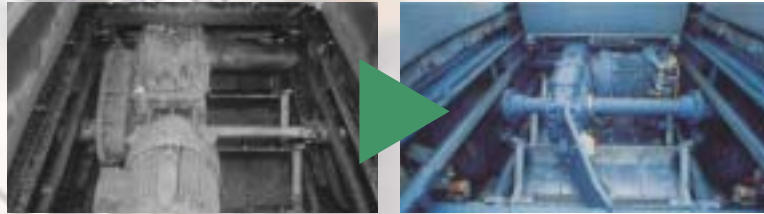
In every aspect of your upgrade project, KONE is committed to provide the highest quality products and services.

Committed to the environment

KONE firmly believes that a sustainable building is the future, and is committed to help customers achieve their environmental objectives by providing environmentally responsible products and services.



***If you're considering upgrading your escalator,
there's only one name to call: KONE.***



Get a new escalator. Skip the construction

Thanks to KONE ECO3000 Innovative Solutions, various components of your escalator can be easily removed and replaced with new technology to give you a new escalator without major disruptions.

Mechanical

The new energy-saving KONE ECO3000 Drive with a planetary gear replaces the old worm gear, for significant performance improvements.

Electrical

A new microprocessor-based controller significantly improves the operation and energy-efficiency of your escalator.

Step chain

The unique lubrication-free and environment-friendly KONE ECO3000 Chain eliminates service interruptions for lubrication and reduces safety hazards.

Aesthetics

Improving the aesthetic appearance of your escalator can make it an eye-catching feature of the building. Possibilities include new balustrades; new access covers, comb plates, skirts and deckings; cleaning and balancing steps; and attractive lighting systems.

Safety solutions

State-of-the-art technology such as dynamic braking, safety switches, brush systems and demarcation lines can bring your escalator in line with the latest safety standards.



www.kone.com

KONE: A History of Innovation

KONE is one of the leading companies in both the global elevator and escalator business and in materials handling. KONE Elevators & Escalators develops, manufactures, installs, modernizes and services elevators, escalators, autowalks and automatic doors. KONE Materials Handling develops, manufactures and services container-handling equipment and systems, load-handling equipment for vehicles, forest machines and tractors.

KONE Corporation was founded in Finland in 1910 and has had four generations of the same family at the helm for the past 90 years. In the 1960s, an international expansion strategy based on business acquisitions fueled KONE's development into a worldwide organization. KONE now has 36,000 employees and operations in more than 100 countries.

KONE Elevators & Escalators supplies some 30,000 new elevators and escalators annually and services 500,000 more as well as more than 180,000 automatic building doors.

Maintenance and modernization accounts for more than half of KONE Elevators & Escalators' net sales. KONE has service centers that are open 24-hours a day to solve any problems at a moment's notice.

Research and development keep KONE at the leading edge of elevator and escalator evolution. New generations of energy-efficient products have won the corporation worldwide recognition as an innovator and technological leader. They provide significant improvement in both the energy and environmental performance of buildings.

KONE is dedicated to reliability and innovation in serving its worldwide clients. KONE products and services are designed to increase the value and effectiveness of customers' buildings and businesses.